

AVOID BEING VICTIM OF A PHISHING ATTACK



Read Your Email

Look at the sender's address and look for grammatical errors or inconsistencies within the email.



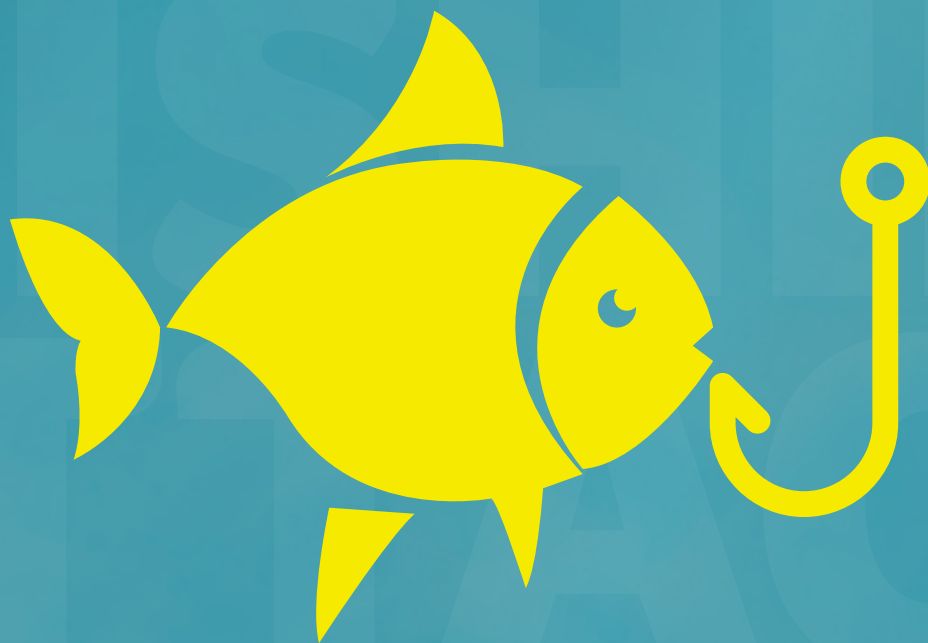
Don't Click the Link

Hover over email links to view the URL's destination. Still unsure? Visit the company's official website or contact them directly.



Report an Attack

If you click a link that is part of a phishing attack, it is crucial to contact your Help Desk immediately to avoid further breaches.



University Email Abuse & Help Desk

University IT: abuse@rochester.edu 585.275.2000 | Medical Center: abuse@urmc.rochester.edu 585.275.3200

For more phishing information, visit: tech.rochester.edu/security/phishing-scams