

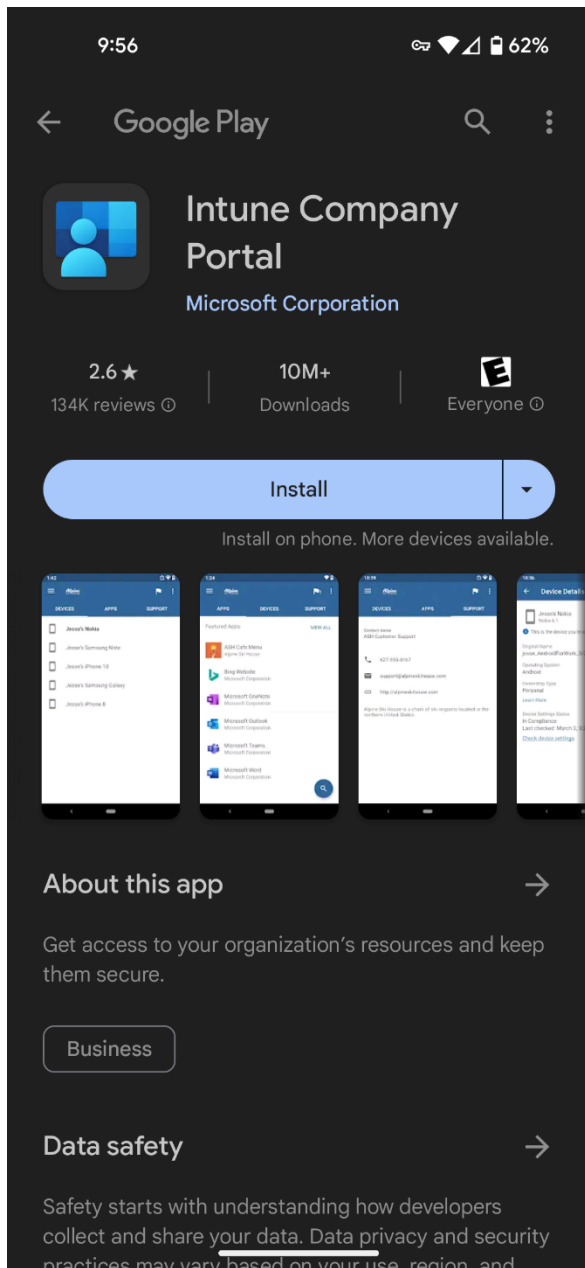
How to Install Microsoft Outlook on Android Devices | M365

Duration: 5 minutes

Step 1

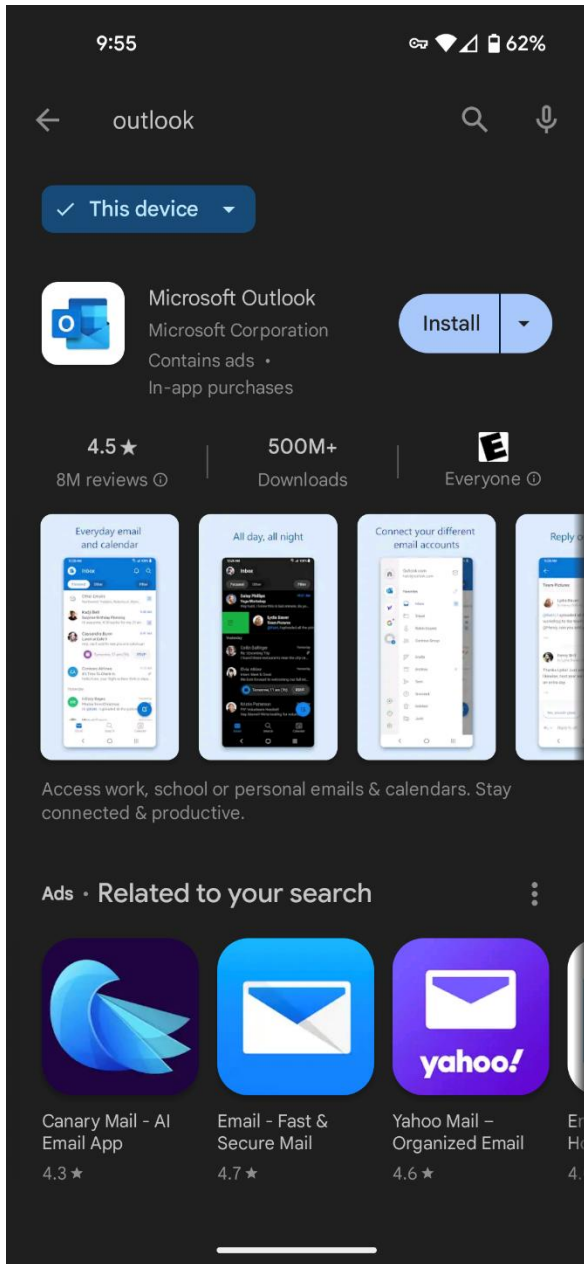
Search and install the Intune Company Portal app from the Play Store.

Do not open or sign in to this app – it only serves as a security measure for Outlook to work on your device.



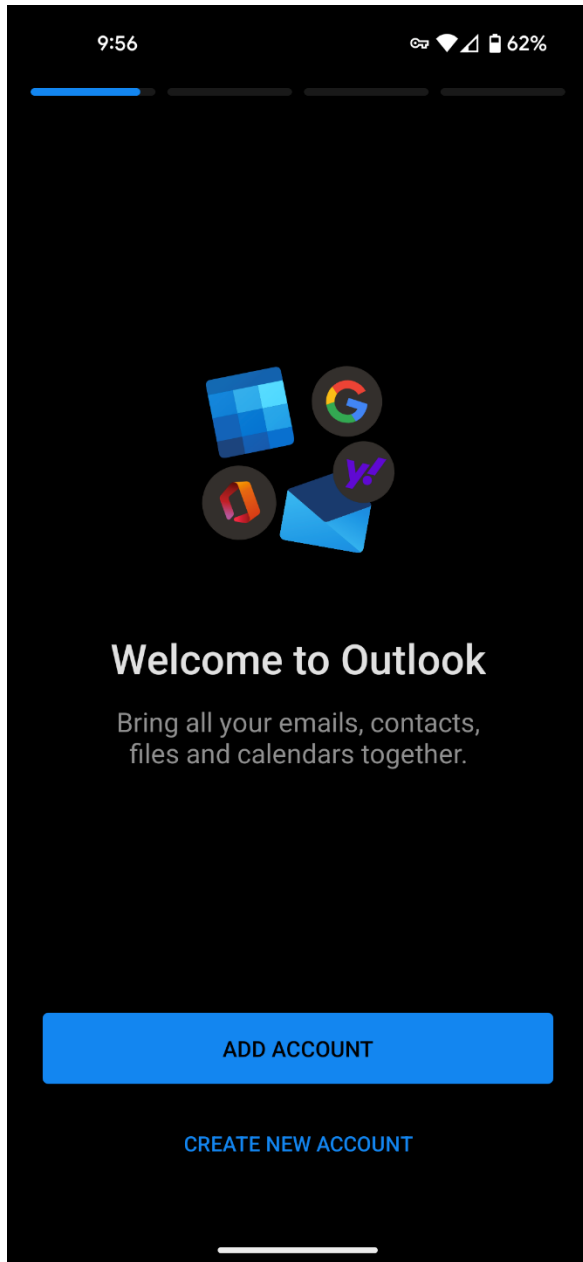
Step 2

Search and install the Microsoft Outlook app from the Play Store.



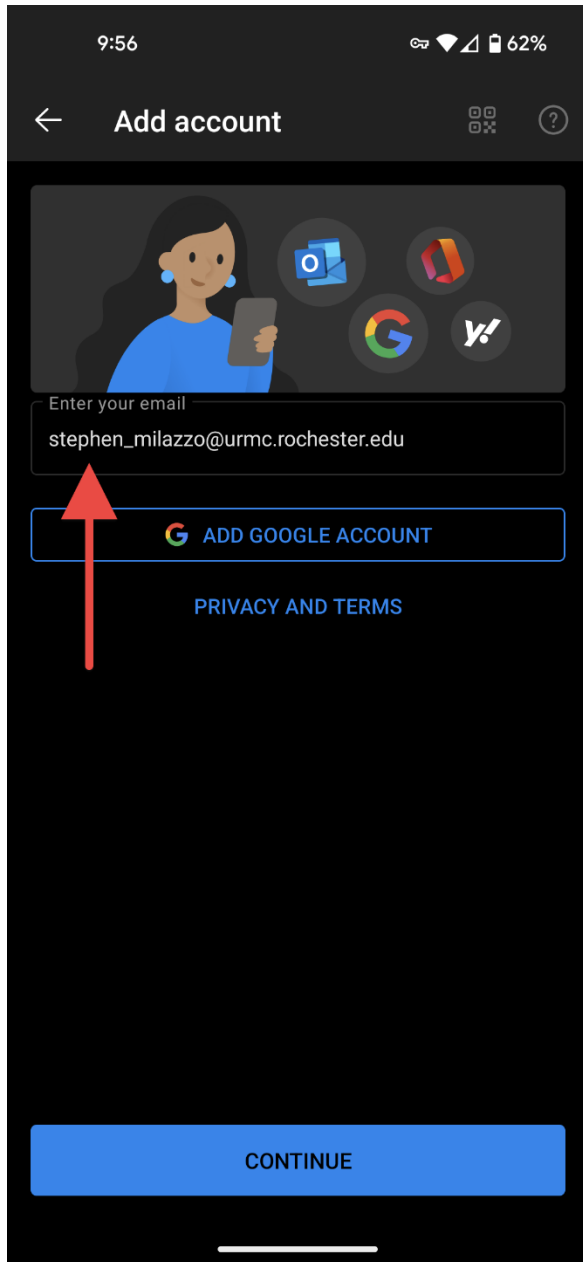
Step 3

Open Microsoft Outlook and click Add Account.



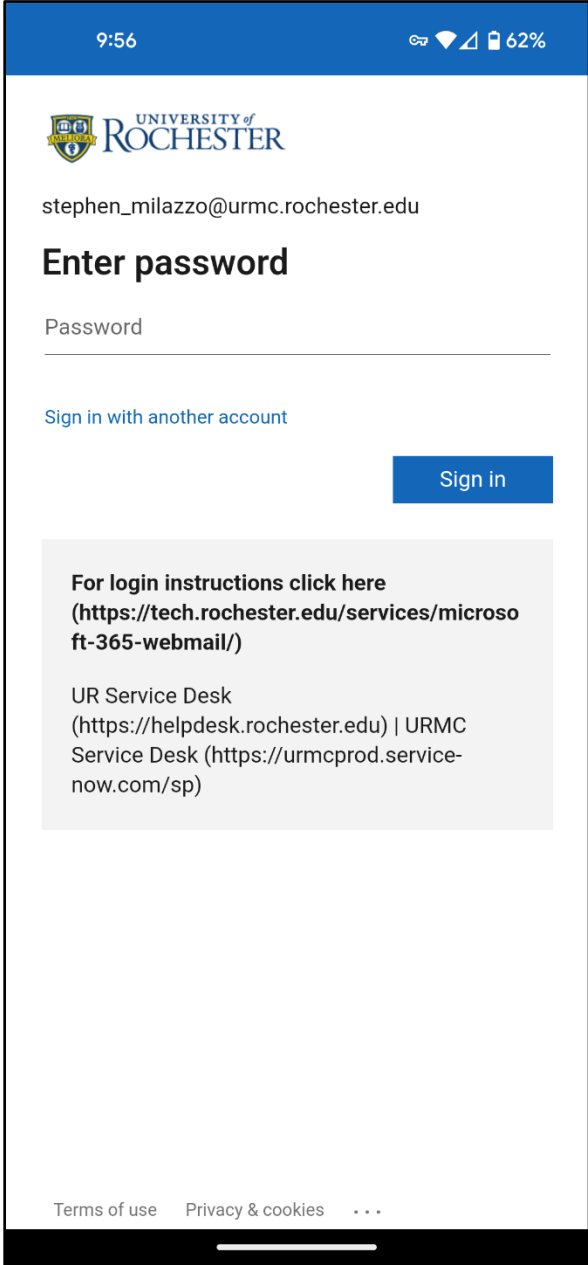
Step 4

Enter your work email address and click Continue.



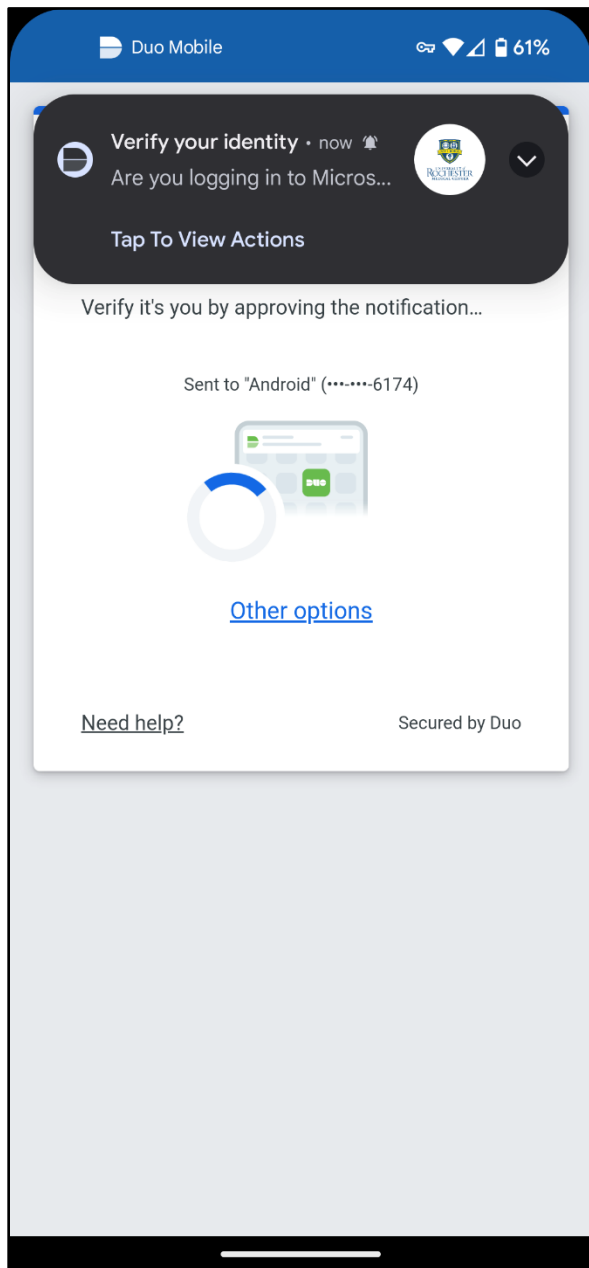
Step 5

Enter your work password and click Sign in.



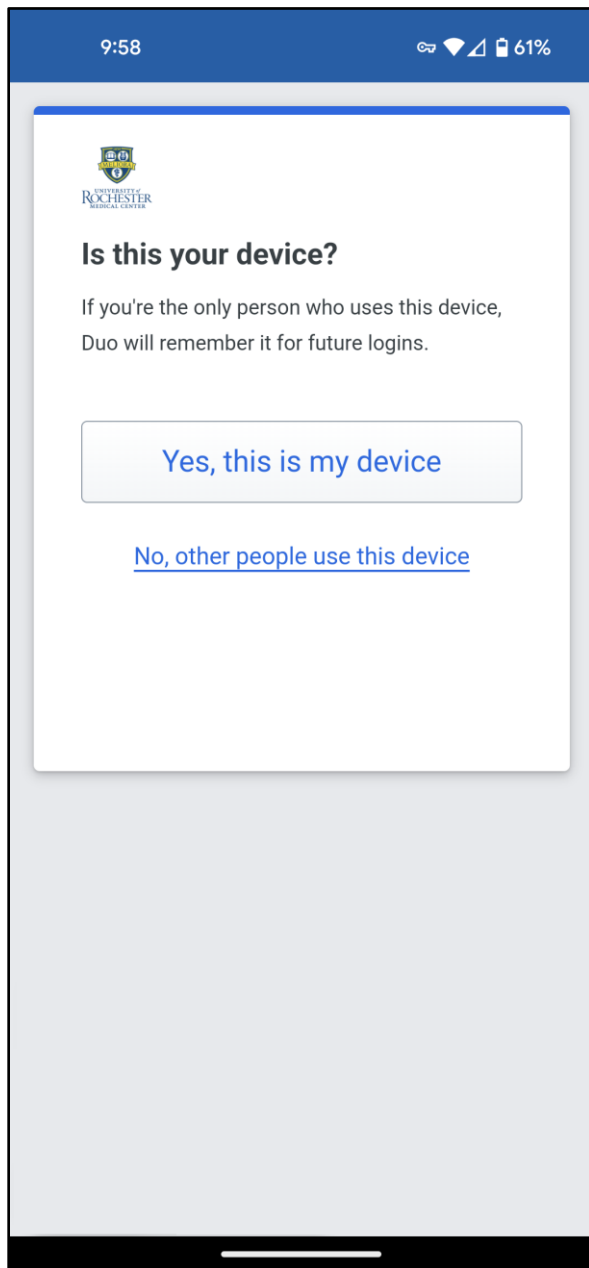
Step 6

Click Approve when you receive the Duo prompt.



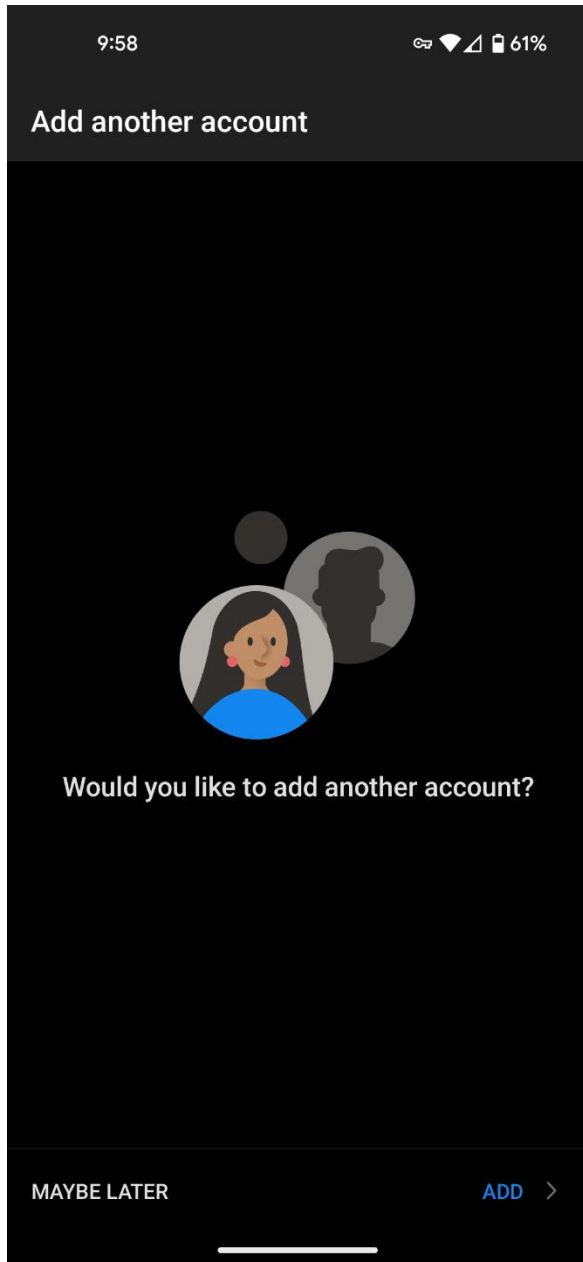
Step 7

Answer "Yes, this is my device" for the prompt.



Step 8

Click "Maybe Later" for adding another email account.



Step 9

Your organization is now protecting the data in the Outlook app. Click continue to view your email.

